

Mounted Exterior Keypad (DC-5200A - 300MHz) (DC-5202A - 310MHz)

Features

The Mounted Exterior Keypad is a battery-operated device that will operate a Digi-Code receiver or a Stanley garage door opener using a four-digit **PIN (Personal Identification Number)**. Pressing four preprogrammed numbers on the keypad sends a radio signal to the receiver or door opener that controls the garage door or gate operator. See Figure 1.

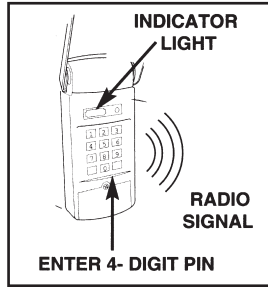


Figure 1

Pressing any key will light the keypad.

The keypad works with both Digi-Code Receivers (DC-5200 & DC-5202) and Stanley **Digital** type door openers.(DC-5202 ONLY)

The keypad will store the last **PIN** entered in its memory, even if the battery is removed.

Pressing any key within 30 seconds after the door has been activated will activate the door again.

⚠ WARNINGS

- Mount the keypad **OUT OF THE REACH OF CHILDREN** at least five feet above the ground.
- **NEVER** allow children to operate the keypad.
- Disconnect power from the door opener before installation.
- Wear safety glasses to protect your eyes during installation.

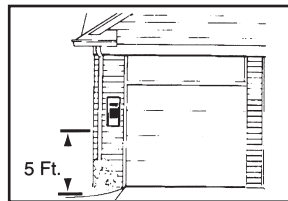


Figure 2

Section 1: General Installation of Your Exterior Keypad

Tools Required:

- Drill with 1/8" bit
- Flathead screwdriver
- Pencil
- Measuring tape

1. Choose a location that will not interfere with the normal operation of the door or gate. See Figure 2.
2. Hold the keypad at the selected location. Using your pencil, mark the wall at the center on the top of the unit.
3. Drill a 1/8" hole 3/4" directly below this mark. See Figure 3.
4. Tighten a screw in the hole until the head is sticking out about 1/16".
5. Hang the unit on the screw. Adjust screw as required for a snug fit.
6. Remove the battery cover to expose the second screw hole. See Figure 4.
7. Mark the position of the second screw with the pencil through the screw hole.
8. Drill another 1/8" hole for the second screw.
9. Tighten the second screw in the hole.
10. Install the battery and replace the battery cover.

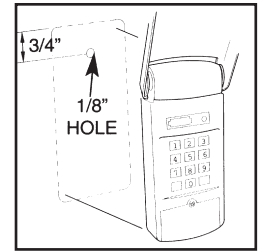


Figure 3

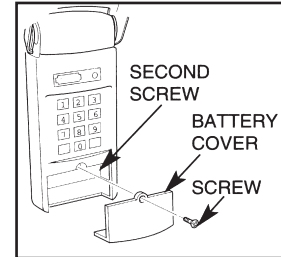


Figure 4

Section 2: Programming to a Digi-Code Receiver (Models DC-5200 & DC-5202) or a Stanley Digital type Garage Door Opener (Model DC-5202 ONLY).

1. Refer to the DIP switch settings in your receiver or the back of your opener and take notes on the chart to the upper right which switches are in the "On" or "Closed" positions. You must have at least 1 of the 10 switches closed.
2. Press the Radio Learn button twice. The light by the Digi-Code label will come on and stay on.
3. Press the numbers that represent the closed switches on the receiver or the garage door opener (i.e. if switches 2,4, and 6 are closed, enter 246. For switch position 10, use the 0 key).
4. Press the Radio Learn button once.
5. To test if you have properly programmed in the radio code, enter the factory set PIN (1-2-3-4). The receiver or opener should operate.

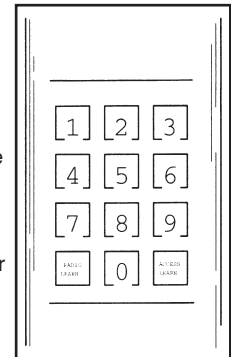


Figure 7

