

Transmitter Coding Instructions

⚠ WARNING: KEEP TRANSMITTERS OUT OF THE REACH OF CHILDREN AT ALL TIMES. THE DOOR MAY OPERATE DURING THE NEXT STEPS. KEEP DOOR PATHWAY CLEAR.

Before each hand held transmitter will operate, the power unit must "LEARN" the code each is sending. Simply follow the next steps to code each transmitter to operate your garage door opener power unit.

A. Press and release the LEARN button located on the rear of the power unit. The red LED indicator above the LEARN button and lights on the power unit will come on, indicating the power unit is now in the LEARN mode. See Figure 1.

B. Locate the transmitter, then while standing near the back of the power unit, press the button on the transmitter you wish to use to operate the garage door. The lights will blink two times then turn off. See Figure 2.

C. Press this SAME button on the transmitter again. This will activate the door opener.

D. The power unit must LEARN each transmitter separately. To code additional transmitters, simply repeat steps A through C for each transmitter.

E. If you get confused or out of sequence, just wait 30 seconds. The light will turn off ending the LEARN mode and allowing you to start over.

F. If you HOLD the LEARN button on the rear of the power unit for 10 seconds, the lights will blink six (6) times then turn off. ALL codes will be erased. See Figure 3.

LIGHT CONTROL

If you program a second button on the same transmitter to the same door opener by repeating steps A through C, it can be used to turn the power unit lights ON and OFF as long as the door is not moving.

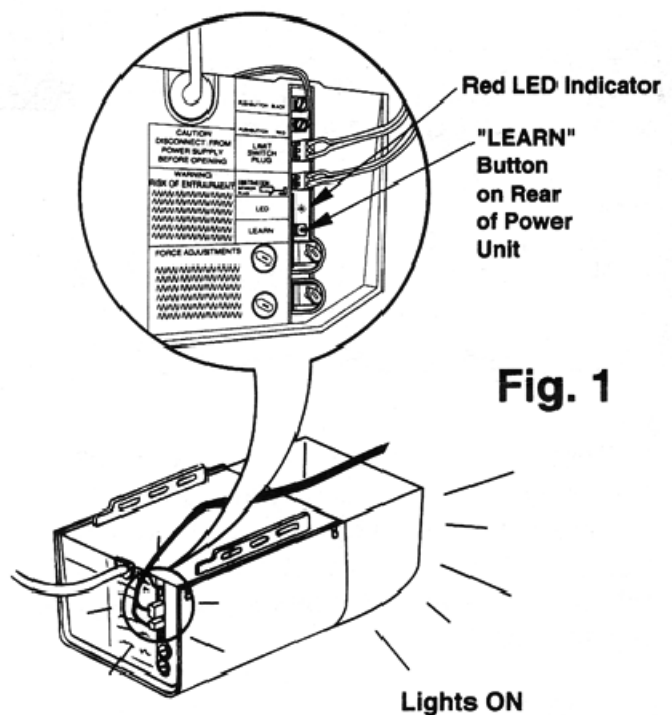


Fig. 1

Fig. 2

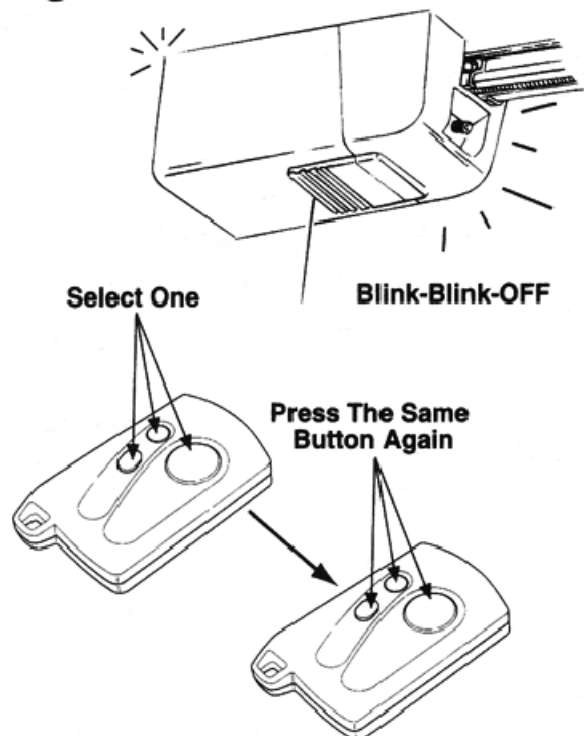


Fig. 3

